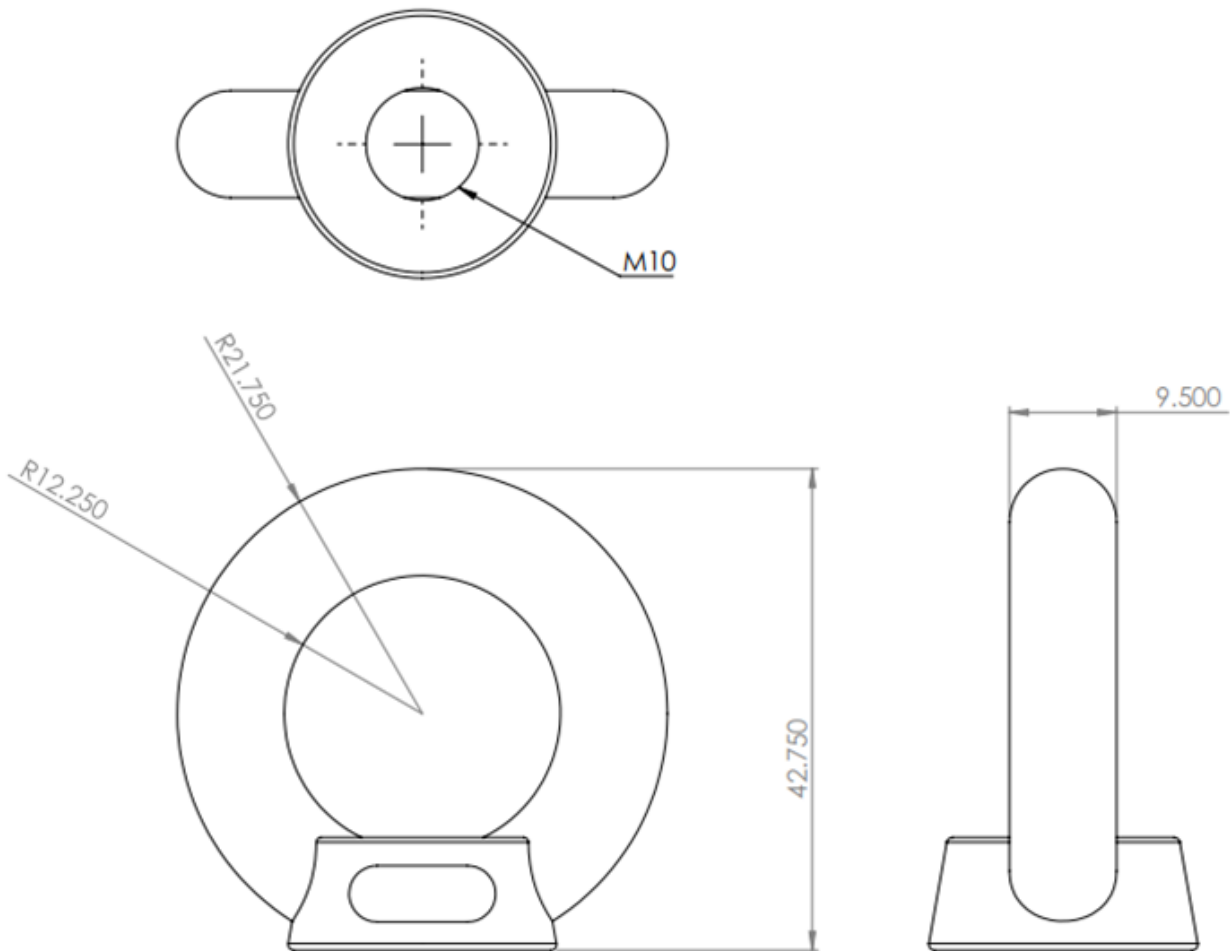


# Female M10 Ring



## Specification

|                        |                                |
|------------------------|--------------------------------|
| <b>Product code</b>    | FP-FR-M10                      |
| <b>Material number</b> | 1501227                        |
| <b>Material</b>        | Stainless steel grade 316      |
| <b>Finish</b>          | Polished                       |
| <b>Weight (kg)</b>     | 0.070                          |
| <b>Quality</b>         | ISO 9001                       |
| <b>Conformity</b>      | EN 795:2012, CEN/TS 16415:2013 |

---

**Application**

Female M10 Ring to be fitted to Soter™ II high load to create start/end. Can also be used for a single point anchor on a high load post.

---

